



First Responder Software Solutions

FIREbase® MAP

In Vehicle Touch Screen Mapping Software...

that provides Critical Information
on Incident Location for best
response and maximum safety
for everyone on scene



SAFERESQ™

Vehicle Identification and Rescue Information Software...

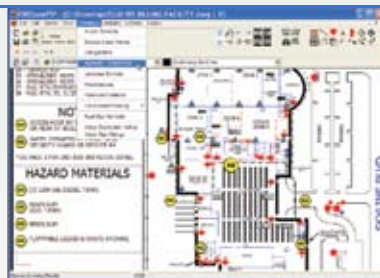
to enable fast and safe extrication
of Accident Victims



FIREbase® PIP

Pre-Incident Planning Software...

formats location specific information
into a ready-to-use Incident Plan
for fast, accurate response



A Free DVD Presentation of First Responder Software Solutions is Available

From...

 **Quala-Tel**
COMMUNICATIONS

FIREbase® MAP

FIREbase® MAP is an in-vehicle, Computer Touch Screen Software that provides critical information to you instantly on the incident location including:

- **Location Map**
- **Pre-Incident Plans**
- **Hydrant and HAZMAT Locations**
- **Evacuation Zones**
- **Important Photos, Videos and other Incident Specific Documents**



Instant Critical Location Information

FIREbase® MAP is designed for ease of use.

Our Touch Screen Technology assures fast and accurate information, night or day for best response and maximum safety of all concerned.

FIREbase® MAP

- **Connects to any CAD Dispatch System**
- **Provides On-Screen Keyboard for Fast Location Address Entry**
- **Provides Latitude and Longitude Coordinates**
- **Provides Exact Distances from Hydrant Locations**
- **Incorporates Pre-Incident Plans, Photos and More**
- **Generates EVAC Zone Map to Guide Fast, Safe Evacuation of People in Danger.**



Use with CAD Dispatch Systems



On-Screen Keyboard



Latitude & Longitude Coordinates



EVAC Zone Mapping

SAFERESQ™ Vehicle Identification and Rescue Information Software

SAFERESQ™ Software provides First Responders with critical rescue information on all vehicles to enable fast and safe extrication of accident victims.

Today's cars use reinforced steel construction and tougher, exotic materials in roofs, posts and doors to protect passengers in case of accidents. Unfortunately, these materials can cause problems in extricating injured people inside.

Knowing where to cut can be extremely important, especially with the possibility of exploding gas canisters that inflate air bags and hidden cables in Hybrid Cars that can deliver dangerous shocks. Updating cutting tools helps but the biggest help comes with specific knowledge of where to cut safely and quickly to extricate injured passengers who may need medical help as fast as possible.

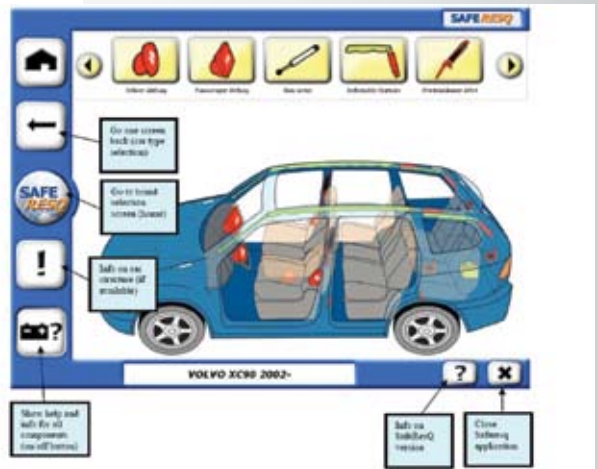
SAFERESQ™ Software is:

- **Subscription Based with 3 Updates a Year from Manufacturers on All New and Used Makes and Models, Including all Hybrids.**
- **No VIN Numbers are Needed**
- **Make, Model and Year for Every Vehicle**
- **Great for Training**

SAFERESQ™ Information can be quickly uploaded to any PC and is updated regularly from the manufacturer.



You Need Information Now!



SAFERESQ Tells You Where to Cut for Maximum Safety



All Models are Covered

A Free DVD Presentation of First Responder Software Solutions is Available

FIREbase® PIP Pre-Incident Planning Software

Fast and easy to use, FIREbase® PIP Software formats location specific information into a ready-to-use Incident Plan that contains all important information on the location for fast response and maximum safety of everyone on scene.

With FIREbase® PIP you can quickly and easily create custom detailed floor and site plans for commercial buildings, schools, apartment complexes, condos, churches, high rise buildings, HAZMAT locations and more.

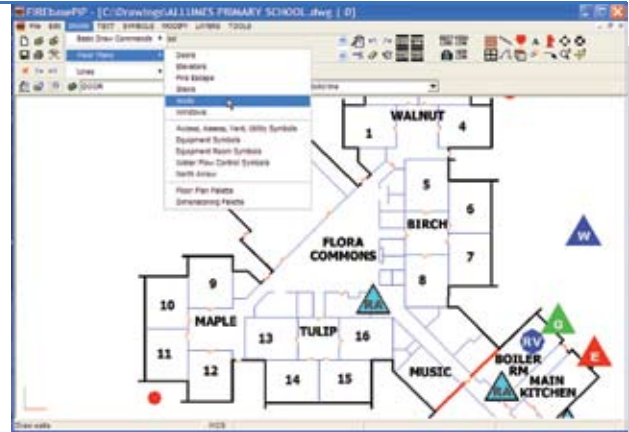
FIREbase® PIP uses standard DWG file format, used by 95% of all architects and civil engineers in the U.S. Users can scan in their files, erase what they don't want, add pre-planning data and save. It's that simple!

Uses Latest NFPA Fire Safety Symbols

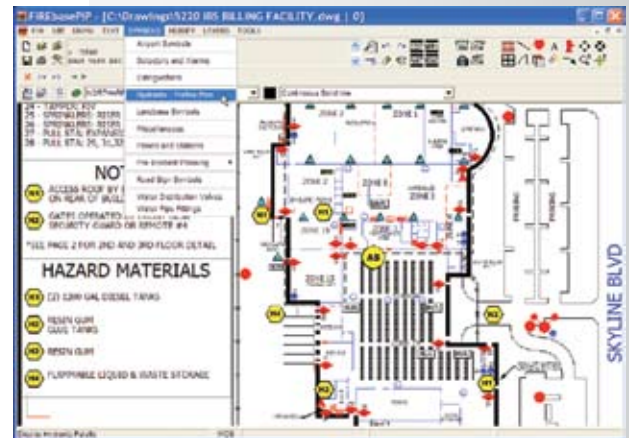
FIREbase® PIP incorporates many custom symbols and automated linetypes, including world standard and latest NFPA Fire Safety Symbols, railroad, gas, powerlines and more.

FireBase PIP® Software Features:

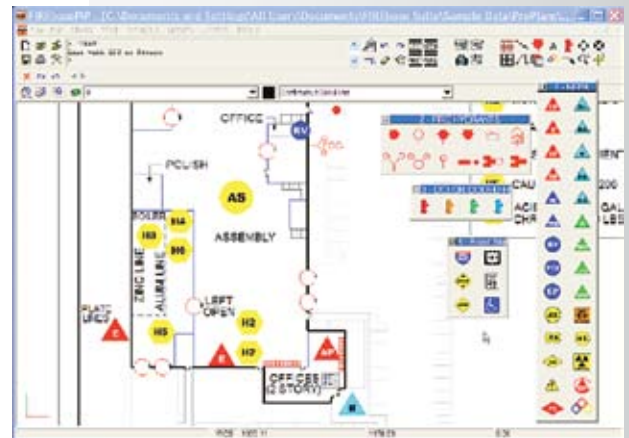
- **Easy-to-Use Technology**
- **Drag-n-Drop Symbols**
- **Latest Full-Color NFPA Safety Symbols**
- **DWG File Format**
- **Includes Templates for Strategic and Tactical Decision Making**
- **Links Photos, Videos, Documents and More**



Create Custom Site Plans



Easy to Use Drag and Drop Symbols



Uses Latest NFPA Safety Symbols



For a Free DVD Presentation of First Responder Software Solutions Or More Information Contact:

1-800-442-1504 or 858-577-2900. Visit www.qualatel.com to see our complete line of First Responder products available.