

# PEAC WMD

**The Only On-Scene Decision Support Software Designed for HAZMAT and CBRNE Professionals**

**In Use Today By Municipal Fire Departments, DOD Agencies and The Military**

PEAC's Comprehensive Database contains information on more than 100,000 references in a fast access format that includes critical information about toxicity and includes ALS/BLS Protocols.

**With PEAC-WMD...**

***You Will Be Prepared On-Scene:***

- With critical information from a database of TIC's / TIM's and CBRNE agents
- ALS / BLS Protocols
- Plume Calculations On Scene with instant communications capability to all Responders involved
- Manufacturer Specific Chemical Protective Clothing with Breakthrough times
- Respirator Recommendations
- Symptoms of exposure
- Threat Matrix – focus on critical hazards when dealing with multiple agents
- Built-in Google search by name, CAS# or UN# segments

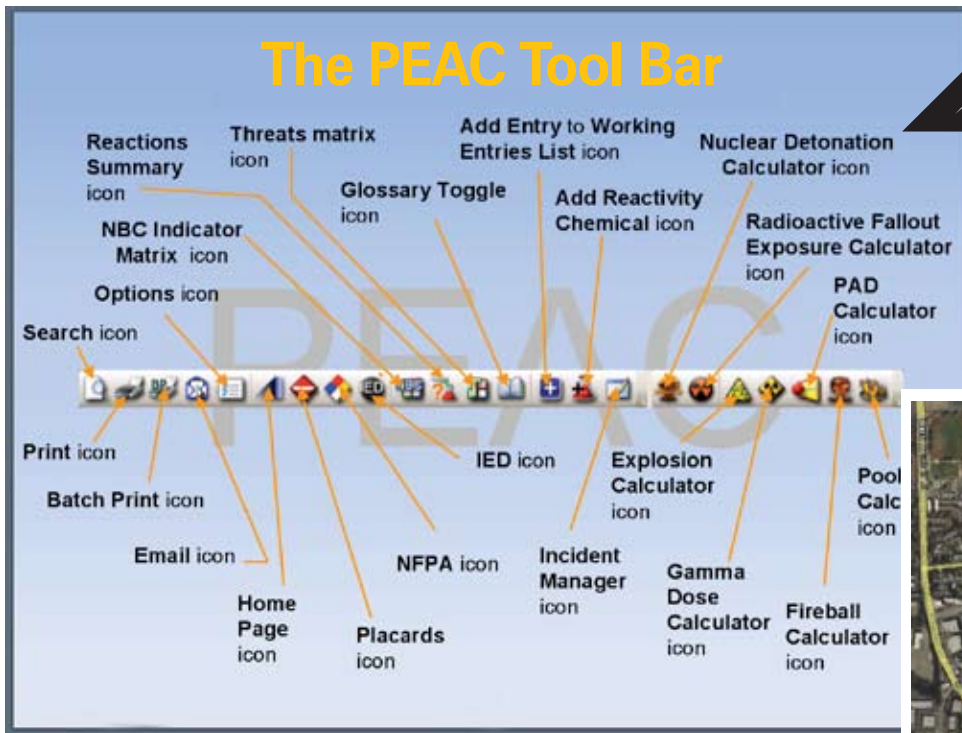
***You Will Be Fast and Accurate in Decision Making:***

- Streamlined Interface enables fast access to database entries
- Search by name, CAS# or UN# segments
- Don't Guess – Run the calc and map results on: Plume, Fireball, Bomb, Gamma, Nuke, Fallout and more
- Built-in Google search by name, CAS# or UN# segments

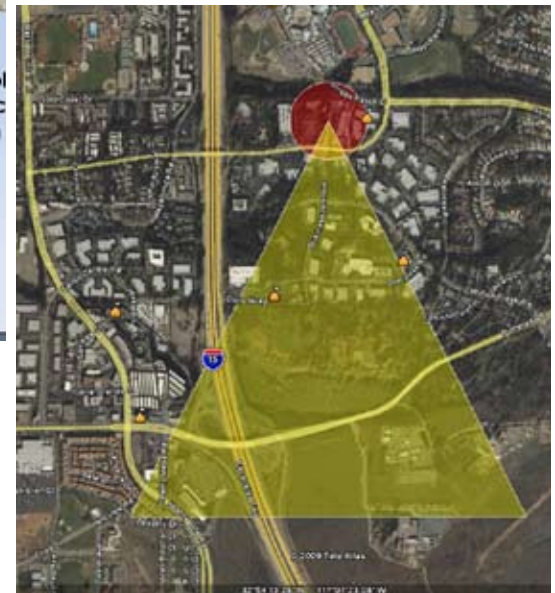
***You Will Be Thoroughly Trained on PEAC-WMD Regularly***

Each copy of PEAC-WMD Software comes with a comprehensive training program that includes on-line tutorials, a library of video information and certified yearly updates on WMD and more.

# The PEAC-WMD Tool Bar Contains Everything You Need On-Scene for Fast and Reliable Decision Making



*PEAC's Reference Database Gives Critical On-Scene Information*



## With PEAC-WMD...

### ***Be Compliant***

- Access stand alone reference sources for easy 3 Reference Checks -
  - DOT ERG
  - CDC Medical Management Guidelines
  - USCG CHRIS Manual
  - NIOSH Pocket Guide
  - DOD Military Chemical Exposure Guidelines
  - IED Cheat Sheet & ATF Vehicle Bomb Tables
- Share and Save info electronically and reduce paperwork

### ***Be Interoperative***

- Import and access forms and reference materials (HTML, Text, PDF)
- Email reference material and modeling results as PDF files
- Send Modeling Results (ESRI™ shape files) with CAP, XML messages

### ***Make Fast and Accurate Decisions On-Scene***

PEAC can calculate Plume Models and overlay them on maps for Responder routing, evacuation areas and shelter in place and email them on-scene.



*State-of-the-Art Emergency Communications and Software Solutions for First Responders*